



EATON

CLUTCH \$799.99



15.5" X 7 Spring, EVERTOUGH™
ITEM NO. EAT108925-20AM

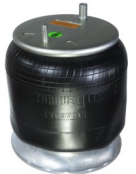
Also available: EAT108925-25AM

15.5" X 7 Spring, 2,050 Torque

TORQUE PARTS

Powerful Alternatives for Truck Parts

AIR BAG



\$79.99

Freightliner, with alum. base

ITEM NO. TORQ-9781

3 Year Warranty



15W40 OIL



\$46.99

15W40 5Gal Oil SHELL T2

ITEM NO. SHELL-T2 5GAL OIL

ANTI-FREEZE, 100%



\$8.99

100% Red, 1 Gal

ITEM NO. TRIPS-RED100%-1GA



BRAKE DRUM



\$64.95

Single Swivel End Air Brake Hose Assemblies

ITEM NO. KC60000-018

TIMKEN

BEARING SET



\$29.99

Bearing Set HM212049/HM212011

ITEM NO. TI413



OIL SEAL



\$28.49

OIL SEAL NATIONAL GOLD TN AXLE

ITEM NO. NA380025A



FUEL INJECTION CLEANER



\$25.00

Gallon Cleaner, Fuel Injection

ITEM NO. LUC10013

Haldex



Double Diaphragm Spring brake



\$39.99

Midland

Double Diaphragm Spring brake
ITEM NO. MID3030LP60

PHILIPS TRACKER BAR



\$31.52

Tracker Bar Dual Spring Kit 16 w/
Qwik-Snap 3- Hose Clip

ITEM NO. PI17-420



Adhesive/Sealant



\$8.99

Fast Set Urethane, 10.1 oz

ITEM NO. BO1100FS



QUARTER FENDER

\$69.99

Black Plastic 24X24

ITEM NO. 18225



MUD FLAP HANGERS SPRING LOADED



\$85.73 (Chrome)

Item No. 14130



Special Effective: March 11 - March 16, 2019

Prices subject to change without notice • All Items are While Supplies Last

UTILITY TRAILER SALES of SOUTHERN CALIFORNIA, LLC

CALL 800.766.4887 for the nearest location • Open: M-F 8:00 am—5:00 pm, Sat: 8:00 am-1:00 pm

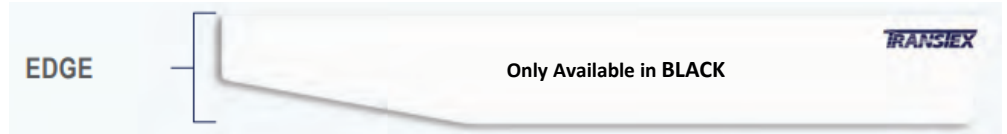
INLAND EMPIRE (Fontana)
15567 Valley Blvd. , CA 92334
TEL: 800.766.4887 or 909.428.8300
FAX: 909.823.9662

LOS ANGELES (Santa Fe Springs)
10604 Hathaway Drive, CA 90670
TEL: 800.766.4887 or 562.232.1200
FAX: 562.758.4898

SAN DIEGO (Otay Mesa)
10140 Marconi Dr # F , CA 92154
TEL: 619.671.2380 FAX: 909.823.9662



The Parts You Need From A Name You Parts You



AERODYNAMIC SKIRTS

- 53 ft. Dry Vans & Reefers Intermodal, Non-Recessed
- 19 FT X 32", and 137 LBS
- SmartWay Verified
- C.A.R.B Compliant
- 30 Min Installation (Two Trained Technicians)

\$899 per kit

ITEM NO. E-1932T



CRANK HANDLE

\$9.59

Horizontal, 9-5/8"
ITEM NO. PZ03-211-H



SANDSHOE, STANDARD

\$16.10

4-1/2"X10"X10"
ITEM NO. PZ05-300



**Axle for Shoe—Part# PZ06-410*

SANDSHOE, LO-PRO

\$15.93

2"X10"X10"
ITEM NO. PZ05-349



**Axle for Shoe—Part# PZ06-410*

PHILIPS TRAILER CABLE

\$2.82 FT

7 Conductor, 1/10, 6/12 ga. .690 O.D.
ITEM NO. 3-222



LICENSE LAMP

\$11.54

Clear, Sealed
ITEM NO. GR60331



Truck-Lite SEALED LAMP

\$1.99

Lamp 4" ECONO 40 S/T/T—Red
ITEM NO. TL40282R



BarTender Cargo Bar Holder

\$34.99

Storage for Jack Bars, Saf-T-Lok Bars and Saf-T-Bar II Bars on the exterior of the tractor cab.
Item No. KI10062



E-TRACK

\$19.99 (Min Qty 10)

Series E oriz. Painted Track, 10 ft.
Item No. KI43002

\$43.66

Series E oriz. Galv Track, 24 ft.
Item No. KI43001-24'



RATCHET STRAP

\$13.95

Ratchet Strap, 2" x 30 ft, Flat Hook
Item No. KI573020

\$6.99

Logistic Strap, 2" x 12 ft, 811 Ratchet
Item No. KI641201



Special Effective: March 11 - March 16, 2019

Prices subject to change without notice • All Items are While Supplies Last

UTILITY TRAILER SALES of SOUTHERN CALIFORNIA, LLC

CALL 800.766.4887 for the nearest location • Open: M-F 8:00 am—5:00 pm, Sat: 8:00 am-1:00 pm

www.utilitytrailersales.com